

Topic: Sense Organs in Pila

By Dr. Sumita Kuni Khan
A.P. & Head.
P.G. Dept. of Zoo.
M.C. Ass.

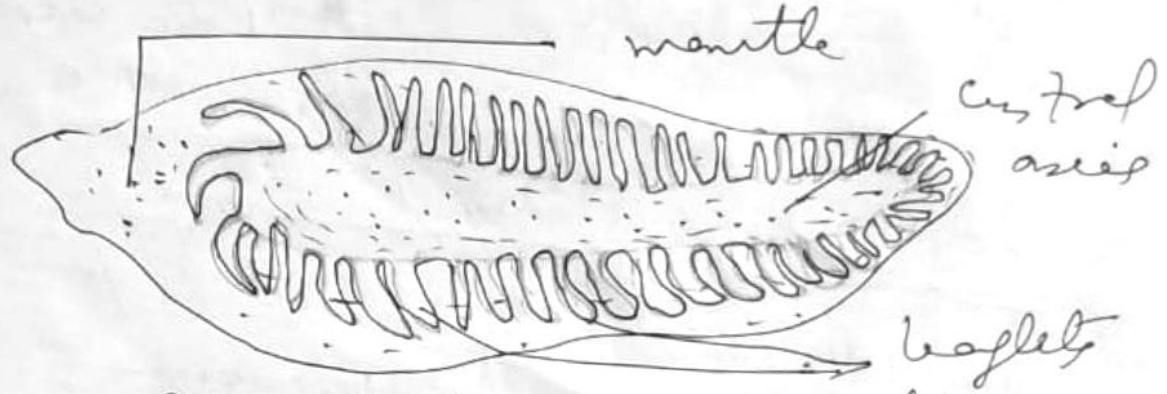
Sense Organs in Pila

In Pila, the special organs of sense are

- (i) A single Osphradium;
- (ii) paired Eyes.
- (iii) Statocysts and
- (iv) Tentacles.

(i) Osphradium :- Osphradium hangs from the mantle near the left pseudopodium. It is oval with 22 to 28 fleshy leaflets arranged on the sides of a central axis. It is a chemoreceptor and feels the current of water which enters the mantle cavity through the left pseudopodium; it also exercises selection over the food taken in. The evolution of gastropod osphradium, parallels that of ctenidia, in primitive forms and osphradium is present for each ctenidium in prosobranchs which have

one ctenidium, there is only single osphradium; the osphradium disappears in those gastropods which have lost the ctenidia, or have a reduced mantle cavity, or have become pelagic.



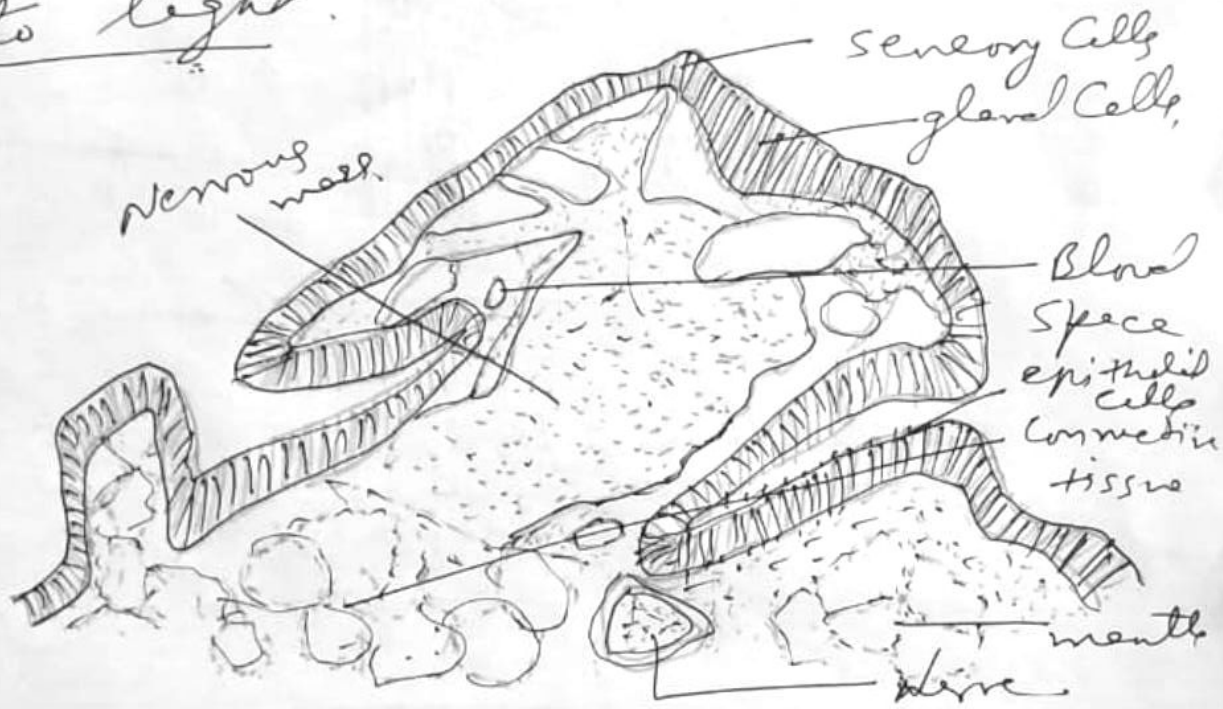
Pile globose : osphradium

(ii) Statocyst :- It is located in the foot near each pedal ganglion. A statocyst is a depression. It is a small capsule lined with epithelial cells and surrounded by connective tissue. In the cavity of the capsule are small calcareous statocores. The statocyst receives nerve from pedal ganglion and cerebral ganglion, their organs of equilibrium and regulates the position of the snail.

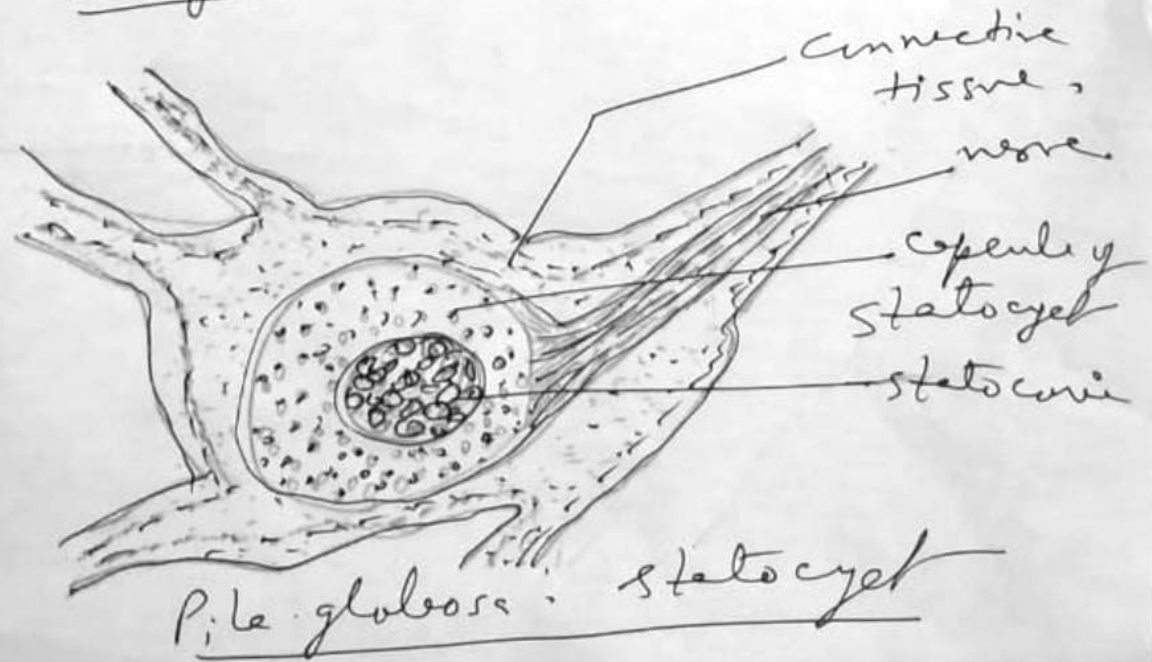
(iii) Eyes :- There is a pair of eyes, each borne on an ommatophore and eyes are over capsules, its wall is the retina made of pigmented,

sensory cells. It is continued in front as
 thin, non-pigmented transparent
 cornea. The overlying epidermis is
 transparent; in the interior of the
 capsule is a clear ovoidal lens
 surrounded by a dense vitreous body.
 An optic nerve innervates the
 retinal cells; Eyes are sensitive
to light.

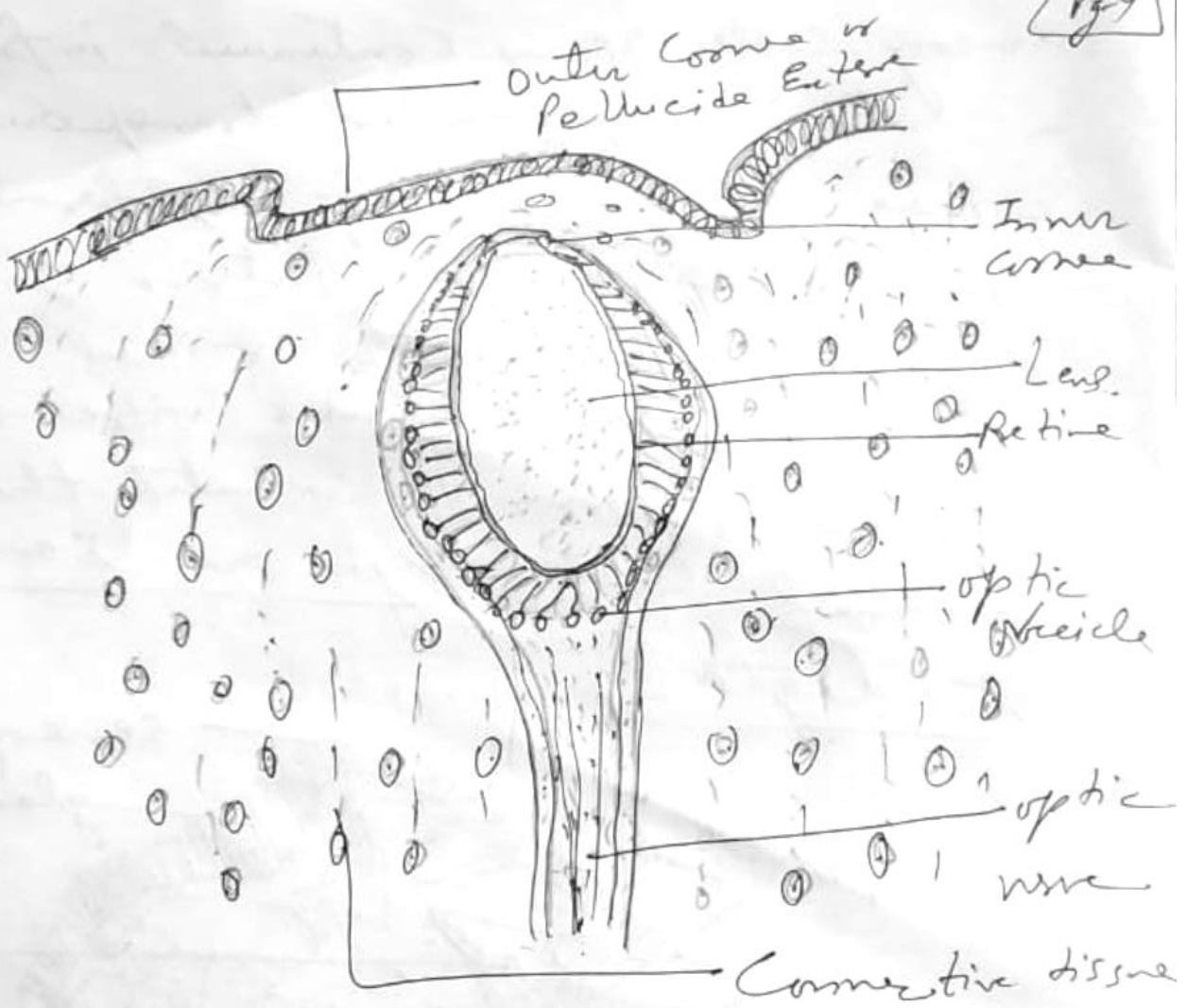
MI DUAL CAMERA
 REDMI NOTE 6 PRO



Pila globosa: T.S. oosphraclium



Pila globosa: statocyst



Pila globose : Horizontal longitudinal
section of eye

—
—
—